

# Control System Connectivity

Pat Fairbank & Leigh Pauls — November 8th, 2008



## Control System Connectivity

### Components

cRIO  
Camera  
Wireless Bridge  
Driver Station  
Wireless Router

### Configuration

IP Addresses  
Wireless Setup  
cRIO Imaging  
Driver Station

Questions?

# Patrick Fairbank

- ▶ 9 years of *FIRST* experience
- ▶ Mentor for Team 296, 2004 – 2006
  - ▶ 2006 World Champions
- ▶ Mentor for Team 1503, 2007 – Present
  - ▶ 2 regional finalists
- ▶ University of Waterloo undergrad student
  - ▶ Mechatronics Engineering, Class of 2011



## Control System Connectivity

### Components

cRIO  
Camera  
Wireless Bridge  
Driver Station  
Wireless Router

### Configuration

IP Addresses  
Wireless Setup  
cRIO Imaging  
Driver Station

### Questions?

# Components

- ▶ Communication between control system components is done over TCP/IP
- ▶ Connections are made with standard Ethernet cable and RJ-45 connectors
- ▶ 802.11n wireless link between driver station and robot



## Control System Connectivity

### Components

cRIO

Camera

Wireless Bridge

Driver Station

Wireless Router

### Configuration

IP Addresses

Wireless Setup

cRIO Imaging

Driver Station

Questions?

# cRIO

- ▶ National Instruments Compact Reconfigurable Input/Output
- ▶ Communicates via 2 Ethernet ports:
  - ▶ Port 1: Wireless Bridge to the Driver Station
  - ▶ Port 2: Camera



## Control System Connectivity

### Components

cRIO

Camera

Wireless Bridge

Driver Station

Wireless Router

### Configuration

IP Addresses

Wireless Setup

cRIO Imaging

Driver Station

### Questions?

# Camera

- ▶ Axis 206 network camera
- ▶ Connects to Port 2 of cRIO using a crossover cable



## Control System Connectivity

### Components

cRIO

Camera

**Wireless Bridge**

Driver Station

Wireless Router

### Configuration

IP Addresses

Wireless Setup

cRIO Imaging

Driver Station

### Questions?

# Wireless Bridge

- ▶ Linksys WGA600N Wireless Gaming Adapter
- ▶ Connects to Port 1 of cRIO using standard network cable



## Control System Connectivity

### Components

cRIO  
Camera  
Wireless Bridge  
**Driver Station**  
Wireless Router

### Configuration

IP Addresses  
Wireless Setup  
cRIO Imaging  
Driver Station

### Questions?

# Driver Station

- ▶ Has 2 Ethernet ports for connecting to:
  - ▶ Wireless router
  - ▶ Programming computer
  - ▶ cRIO (tethering)
  - ▶ Competition radio



Pat Fairbank & Leigh Pauls, 2008



## Control System Connectivity

### Components

cRIO

Camera

Wireless Bridge

Driver Station

**Wireless Router**

### Configuration

IP Addresses

Wireless Setup

cRIO Imaging

Driver Station

Questions?

# Wireless Router

- ▶ Linksys WRT610N
- ▶ 4 port switch + Internet
- ▶ Like the 2007/2008 radios, not used in actual competition





## Control System Connectivity

### Components

cRIO  
Camera  
Wireless Bridge  
Driver Station  
Wireless Router

### Configuration

IP Addresses  
Wireless Setup  
cRIO Imaging  
Driver Station

### Questions?

# Configuration

- ▶ Assigning the correct IP address to each piece of the control system
- ▶ Imaging the cRIO for C++ or LabVIEW
- ▶ Updating the Driver Station firmware and setting the team number



## Control System Connectivity

### Components

cRIO  
Camera  
Wireless Bridge  
Driver Station  
Wireless Router

### Configuration

IP Addresses  
Wireless Setup  
cRIO Imaging  
Driver Station

### Questions?

# IP Addresses

Component	Team IP	Example: 1114
cRIO Port 1	10.xx.yy.2	10.11.14.2
cRIO Port 2	192.168.0.3	192.168.0.3
DS Port 1	10.xx.yy.4	10.11.14.4
DS Port 2	10.xx.yy.5	10.11.14.5
Camera	192.168.0.90	192.168.0.90
PC	10.xx.yy.6	10.11.14.6

Where xx and yy are the digits of team number xxyy

Subnet mask for 10.xx.yy.z addresses: 255.0.0.0



## Control System Connectivity

### Components

cRIO  
Camera  
Wireless Bridge  
Driver Station  
Wireless Router

### Configuration

IP Addresses  
**Wireless Setup**  
cRIO Imaging  
Driver Station

### Questions?

# Wireless Setup

- ▶ Both the WRT and the WGA need to have the same network settings (SSID, security, etc.)
- ▶ By default, WRT assigns addresses in the 192.168.1.x range
- ▶ If changed to assign addresses in the 10.xx.yy.z range, you can program wirelessly and have Internet access at the same time



## Control System Connectivity

### Components

cRIO  
Camera  
Wireless Bridge  
Driver Station  
Wireless Router

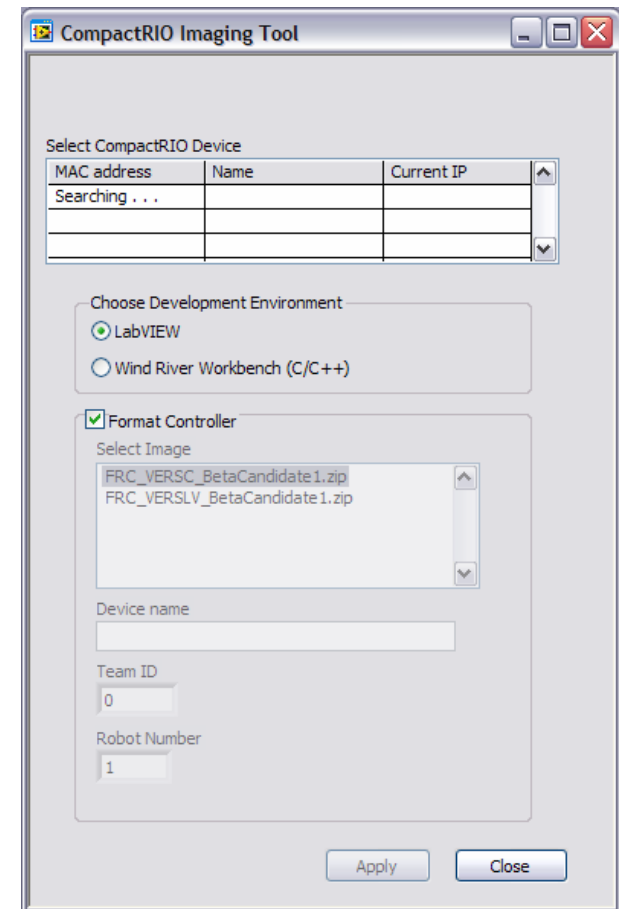
### Configuration

IP Addresses  
Wireless Setup  
cRIO Imaging  
Driver Station

### Questions?

# cRIO Imaging

- ▶ The cRIO must be “imaged” for firmware upgrades and to switch between C++ and LabVIEW, using a tool from FIRST
- ▶ Automatically sets the cRIO IP address based on team number
- ▶ Computer must be set to IP address 10.xx.yy.6, and must have a wired connection to cRIO



## Control System Connectivity

### Components

cRIO  
Camera  
Wireless Bridge  
Driver Station  
Wireless Router

### Configuration

IP Addresses  
Wireless Setup  
cRIO Imaging  
Driver Station

Questions?

# Driver Station Setup

- ▶ IP addresses are set automatically from the team number
- ▶ The team number is set by holding down the middle button for 4 seconds
- ▶ Firmware upgrades are accomplished by plugging a USB key containing the new firmware into USB Port 1



## Control System Connectivity

### Components

cRIO

Camera

Wireless Bridge

Driver Station

Wireless Router

### Configuration

IP Addresses

Wireless Setup

cRIO Imaging

Driver Station

## Questions?

# Questions?

- ▶ This presentation and other resources will be posted to the *FIRST* Beta Test Public Forum:

<http://forums.usfirst.org/forumdisplay.php?f=743>

